



# Twickenham Circular via 3 rivers Walk

The Thames towpath, the River Crane and the Duke of Northumberland's river

---

**Length** 6.9 miles (11.1 km)

---

**Toughness** 1/10, flat, on paved all-weather surfaces

---

**Map** OS Explorer (or Google Maps)

---

**Features** This urban walk follows 2 small rivers and the Thames towpath in a loop around Twickenham (near Richmond) in west London.

Starting from Twickenham station, it follows the River Crane inland through a mix of riverside paths and local parks.

It leaves it to join the Duke of Northumberland's River along another riverside path, which passes Twickenham Rugby stadium, a sewage farm, and suburbia to reach the Thames at Isleworth.

Here, the nature of the walk changes completely, from a small river through suburbs, to the wide open Thames towpath passing luxury houses. Detour left for the London Apprentice pub and a lovely vista of the Thames, but the onward route is right, passing Isleworth Ait (island), Richmond, and several more riverside pubs, to enter Marble Hill Park (free) and House (museum, English Heritage, free), with views of Ham House (NT) on the opposite bank.

You come to Eel Pie Island (Artists open house, free, 2 Sundays per year), to reach York House (council offices) - with it's riverside gardens and Italianate "Bare Naked Ladies" statues.

Here, you head inland to Twickenham station.

- 
- Options**
- A sister walk **SWC.376** follows the River Crane path from Twickenham
  - A short-cut is shown via Cole Park which cut's off a pleasant loop of the Thames and Marble Hill House.
  - Do not be tempted to take a "short cut" following the Crane from its source on the Thames towards Twickenham station. There is no riverside route - you have to zig-zag along residential streets. The

allotment gardens marked on the OS map are not open to the public. Then you have to cross a dangerous 4 lane A road.

- If you carry on along the Thames, its a lot of road walking to Teddington Lock where you can cross the Thames to the south bank path. Strawberry Hill House is a little inland.

## Travel

Trains from London Waterloo (and Clapham Junction) go to Twickenham (Zone 5) every 15 mins, and take about 30 mins. Alternatively, you can take the tube to Richmond, and walk from there to the Thames (add 0.5km each way) or take the train 1 stop to Twickenham

By car, to avoid CPZ, park near TW2 6NA, and walk along the River Crane path to join the walk. Avoid rugby match days when parking will be difficult!

## Notes

- [Crane River](#)
- The eastern section of [Duke of Northumberland's River](#) was built to power mills, and later irrigate Syon Park (a large country house)
- [Twickenham Rugby Stadium](#) - England's national rugby stadium
- [Marble Hill House](#) (English Heritage) [[wikipedia](#)] is set in a riverside park, and should reopen after a major refurbishment in 2021. It is an elegant Thameside [Palladian](#) villa built in the 1720s by [Henrietta Howard](#), the mistress of the Prince of Wales (later [King George II](#)), with a settlement she received at the end of their relationship.
- York House. Now council offices, it's gardens are open to the public. The riverside section, free, separated from the house by the Thames Path, contain several large Italianate statues - the "[Naked Ladies](#)" - which may or may not be fakes.

## Help Us!

After the walk, please leave a [comment](#), it really helps. Thanks!

You can also upload photos to the  [SWC Group on Flickr](#) ([upload your photos](#)) and [videos to](#)  [Youtube](#). This walk's tags are:

## By Car

### Start

## Help

National Rail: 03457 48 49 50 • Traveline (bus times): 0871 200 22 33 (12p/min) • TFL (London) : 0343 222 1234

## Version

Apr-25 [Andrew](#)

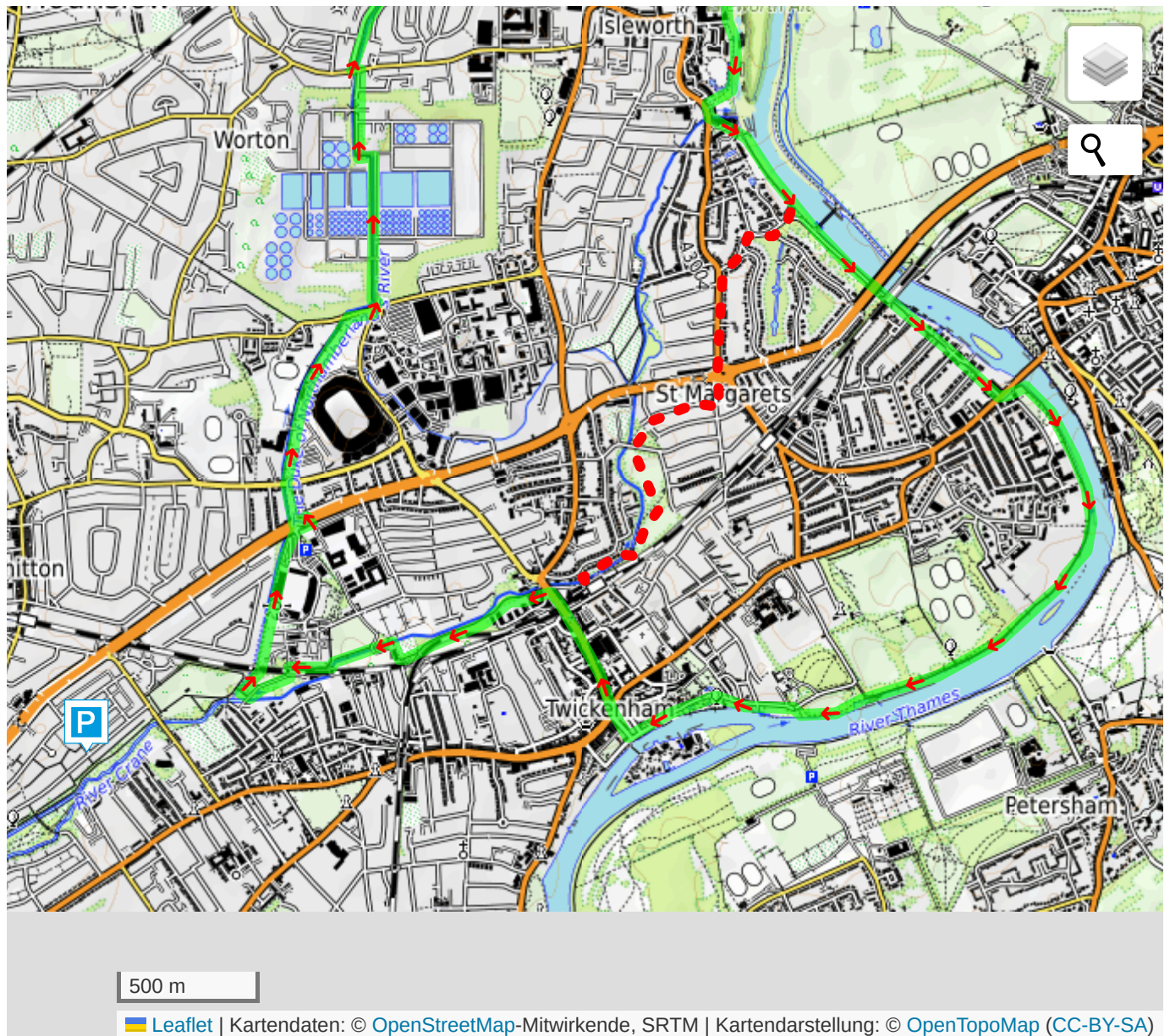
## Copyright

© [Saturday Walkers Club](#). All Rights Reserved. No commercial use. No copying. No derivatives. Free with attribution for one time non-commercial use only. [www.walkingclub.org.uk/site/license.shtml](http://www.walkingclub.org.uk/site/license.shtml)

# Walk Directions

OpenStreetMap (not OS) mapping is used in the PDF for licence reasons.

# Map



© Saturday Walkers Club. All Rights Reserved. No commercial use. No copying. No derivatives. Free with attribution for one time non-commercial use only.  
[www.walkingclub.org.uk/site/license.shtml](http://www.walkingclub.org.uk/site/license.shtml)